

**Anti-Radixin Rabbit Monoclonal Antibody**  
**Catalog # ABO13896****Specification**

---

**Anti-Radixin Rabbit Monoclonal Antibody - Product Information**

Application	WB, IHC, IF, ICC, IP, FC
Primary Accession	<a href="#">P35241</a>
Host	Rabbit
Isotype	Rabbit IgG
Reactivity	Rat, Human, Mouse
Clonality	Monoclonal
Format	Liquid

**Description**

Anti-Radixin Rabbit Monoclonal Antibody . Tested in WB, IHC, ICC/IF, IP, Flow Cytometry applications. This antibody reacts with Human, Mouse, Rat.

**Anti-Radixin Rabbit Monoclonal Antibody - Additional Information**

**Gene ID** 5962

**Other Names**

Radixin, RDX

**Calculated MW**

68564 MW KDa

**Application Details**

WB 1:5000-1:10000<br>IHC 1:50-1:200<br>ICC/IF 1:50-1:200<br>IP 1:100<br>FC 1:100

**Subcellular Localization**

Cell membrane; Peripheral membrane protein; Cytoplasmic side. Cytoplasm, cytoskeleton. Cleavage furrow. Highly concentrated in the undercoat of the cell-to-cell adherens junction and the cleavage furrow in the interphase and mitotic phase, respectively.

**Contents**

Rabbit IgG in phosphate buffered saline, pH 7.4, 150mM NaCl, 0.02% sodium azide and 50% glycerol, 0.4-0.5mg/ml BSA.

**Immunogen**

A synthesized peptide derived from human Radixin

**Purification**

Affinity-chromatography

**Storage**

**Store at -20°C for one year. For short term storage and frequent use, store at 4°C for up to one month. Avoid repeated freeze-thaw cycles.**

## Anti-Radixin Rabbit Monoclonal Antibody - Protein Information

**Name** RDX

### Function

Probably plays a crucial role in the binding of the barbed end of actin filaments to the plasma membrane.

### Cellular Location

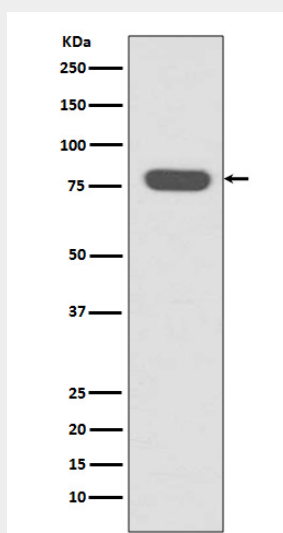
Cell membrane; Peripheral membrane protein; Cytoplasmic side. Cytoplasm, cytoskeleton. Cleavage furrow. Cell projection, microvillus {ECO:0000250|UniProtKB:P26043}. Cell projection, stereocilium {ECO:0000250|UniProtKB:P26043}. Note=Enriched at the stereocilium base with very low levels in the shaft of stereociliary bundles (By similarity). Highly concentrated in the undercoat of the cell-to-cell adherens junction and the cleavage furrow in the interphase and mitotic phase, respectively {ECO:0000250|UniProtKB:P26043}

## Anti-Radixin Rabbit Monoclonal Antibody - Protocols

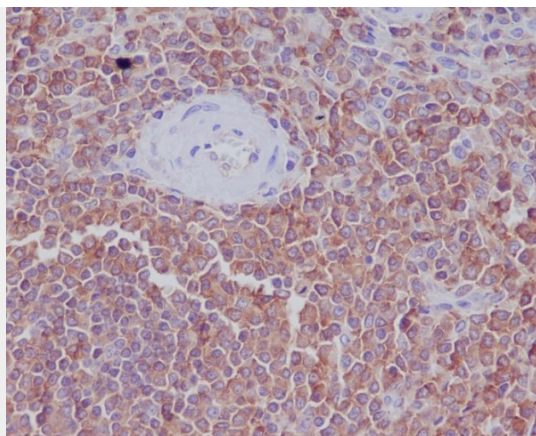
Provided below are standard protocols that you may find useful for product applications.

- [Western Blot](#)
- [Blocking Peptides](#)
- [Dot Blot](#)
- [Immunohistochemistry](#)
- [Immunofluorescence](#)
- [Immunoprecipitation](#)
- [Flow Cytometry](#)
- [Cell Culture](#)

## Anti-Radixin Rabbit Monoclonal Antibody - Images



Western blot analysis of Radixin expression in HeLa cell lysate.



Immunohistochemical analysis of paraffin-embedded human spleen, using Radixin Antibody.